

ERIE'S PUBLIC SCHOOLS

District Leadership



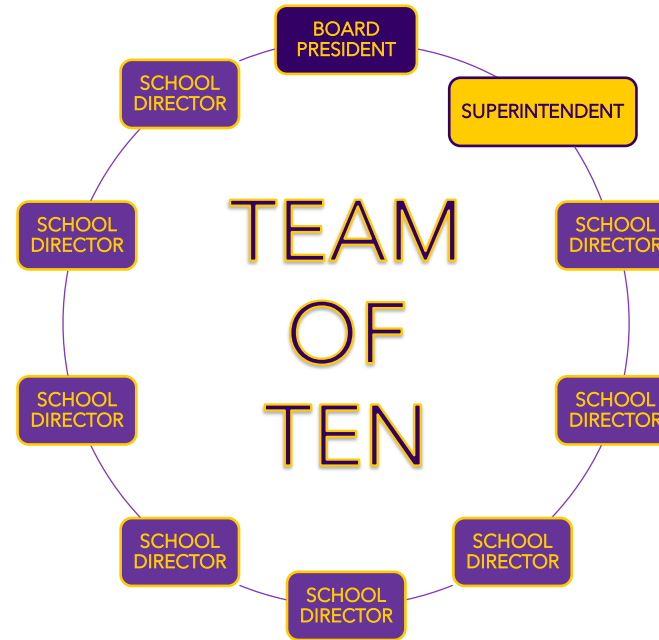
Brian J. Polito, CPA
Superintendent of Schools

The **Erie School District Administrative Team** are the **professionals who run our schools each day**, ensuring everything operates smoothly for students, teachers, and families.

Led by the **Superintendent**, this team includes **principals, department leaders, and support staff** who manage key areas like academics, student services, transportation, and school safety.

This also includes the **many dedicated employees** who work directly with students—**teachers, bus drivers, custodians, cafeteria staff, and more**—all of whom play a vital role in making learning possible.

Together, the Administrative Team **carries out the Board's policies and goals**, ensuring students receive the education and support they need.



The **nine elected School Directors and the Superintendent** work together as the **"Team of Ten,"** combining community leadership and professional expertise to guide the district.

The **School Board sets policies and direction**, while the **Superintendent serves as the district's chief executive**, ensuring those policies are carried out. As part of the **"Team of Ten,"** the Superintendent **does not vote** but plays a key advisory role, providing expertise and ensuring Board decisions are effectively implemented in schools.



School Board

Angie Amatangelo, Dr. Jay Breneman, Gwen Cooley, Daria S. Devlin, Lauren Gillespie, Linda H. Graff, John C. Harkins, Sumner Nichols, Zakaria Sharif

The **City of Erie School District's Board of Education, or School Board**, is made up of **nine unpaid school directors** elected by the community. They volunteer their time because they care about students, teachers, and families in Erie.

The Board's main role is to **set policies, establish goals, and make big decisions** about budgets, school programs, and district leadership. While they **do not run daily operations**—that's the Superintendent's job—they ensure the district is on the right path and doing what's best for students.

One of the Board's most important responsibilities is **hiring and evaluating the Superintendent**, who leads the district's daily operations. Through ongoing assessments, the Board holds the Superintendent accountable for the success of Erie's Public Schools.

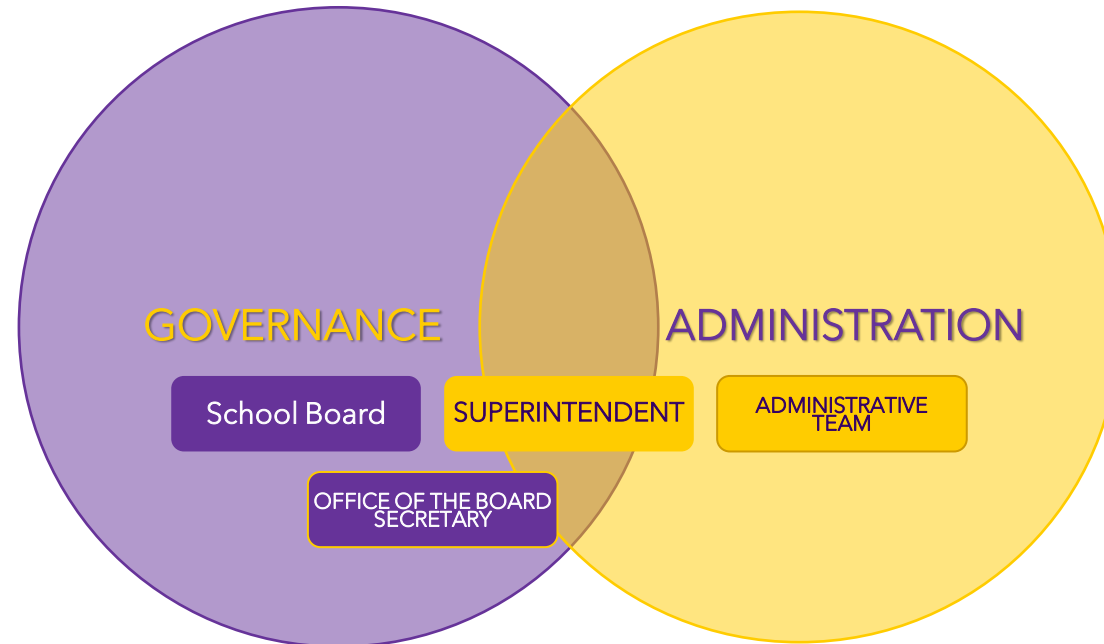
ERIE'S PUBLIC SCHOOLS

How the District Leads

Erie's Public Schools are guided by a **strong partnership between unpaid elected leadership and professional expertise**, ensuring that decisions are made thoughtfully and carried out effectively. **Governance and Administration** are two essential parts of this structure, working together to create a **clear vision for student success** and ensure its implementation across our schools.

Governance is about making **big decisions** and setting rules for how things should work. This is the role of the **School Board and the "Team of Ten"**—they **create policies, set goals, and ensure** the district is doing what's best for students and our school community.

The **Office of the Board Secretary** supports the School Board by organizing meetings, maintaining records, managing financial reporting, and ensuring compliance with state laws and policies. It oversees minutes, expenditures, budgets, and required filings while facilitating communication between the Board, district administration, and the public to ensure transparency and efficiency.



Administration is about putting policies into action and ensuring schools run smoothly each day. **Led by the Superintendent**, the administrative team manages district operations, oversees instruction and student services, and supports teachers, staff, and families.

The administrative team handles staffing, budgeting, facilities, and compliance with state and federal regulations. They coordinate resources, implement programs, and create a safe, effective learning environment that aligns with the district's goals, ensuring students receive the education and support they need.

The big difference is that governance focuses on **what** should be done, while administration focuses on **how** to do it.